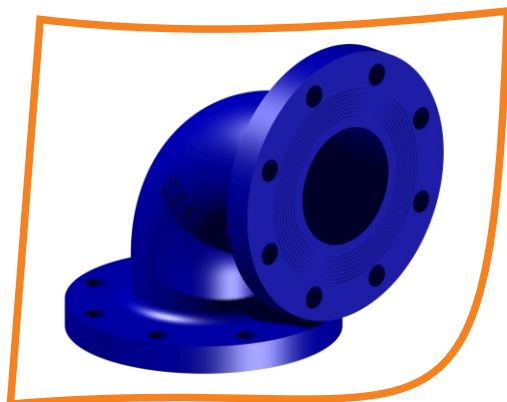
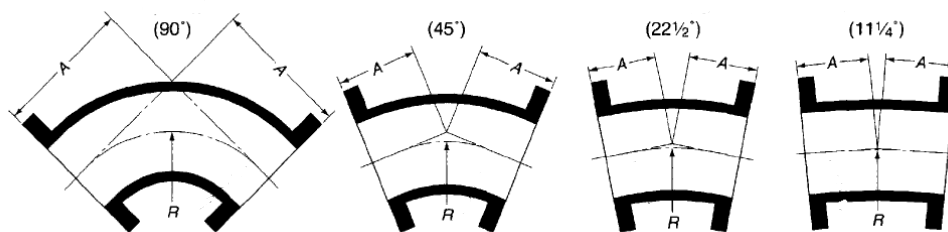


Codo Extremo Brida

Especificaciones:



- Cuerpo: Hierro Nodular ASTM A - 536
Presión de trabajo: 250 psi
- Acabado: Pintura Epóxica azul
- Presentaciones Disponibles: 90° - 45° - 22.5° - 11.25°
- Norma AWWA C 110
- Brida: Tipo ANSI B16.1
- Bridas ISO, bajo pedido



DIMENSIONES GENERALES (mm y grados)



Diam Nominal		$\alpha = 90^\circ$		$\alpha = 45^\circ$		$\alpha = 22,5^\circ$		$\alpha = 11,25^\circ$	
Pulg	mm	A	R	A	R	A	R	A	R
3	75	139.70	88.90	76.20	91.98	76.20	127.60	76.20	257.60
4	100	165.10	101.60	101.60	122.64	101.60	191.50	101.60	322.00
6	150	203.20	127.00	127.00	183.98	127.00	255.30	127.00	386.40
8	200	228.60	165.10	139.70	214.60	139.70	319.20	139.70	450.90
10	250	279.40	190.50	165.10	275.90	165.10	383.00	165.10	515.30
12	300	304.80	226.60	190.50	337.20	190.50	446.90	190.50	579.70
14	350	355.50	292.20	190.50	306.60	190.50	478.80	190.50	644.10
16	400	381.00	317.50	203.20	337.20	203.20	478.80	203.20	644.10
18	450	406.40	355.60	215.90	367.90	215.90	574.00	215.90	772.90
20	500	457.20	381.00	241.30	429.20	241.30	574.00	241.30	772.90
24	600	558.80	431.80	279.40	459.90	279.40	574.60	279.40	772.90
30	750	635.00	546.10	381.00	704.85	381.00	1468.00	381.00	2965.00
36	900	711.20	546.10	457.20	889.00	457.00	1851.00	457.00	3740.00